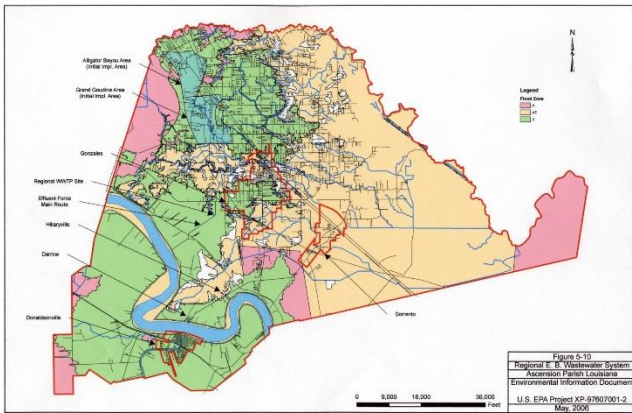


F. EXAMPLE PROJECTS WHICH BEST ILLUSTRATE PROPOSED TEAM'S QUALIFICATIONS FOR THIS CONTRACT

20. EXAMPLE PROJECT KEY NUMBER

Present as many projects as requested by the agency, or 10 projects if not specified.

21. TITLE AND LOCATION (City and State)		22. YEAR COMPLETED	
USACE Section 219 Environmental Infrastructure Program - Program Management Support & STAG Grant Environmental Information Document for Ascension Parish, LA		PROFESSIONAL SERVICES	CONSTRUCTION (If applicable)
		2010	Ongoing
23. PROJECT OWNER'S INFORMATION			
23a. PROJECT OWNER	23b. POINT OF CONTACT	23c. TELEPHONE NUMBER	
US Army Corps of Engineers New Orleans District	Cedric S. Grant, Deputy Mayor of Facilities, Infrastructure and Community Development, City of New Orleans (formerly the Chief Administrative Officer of Ascension Parish, LA)	504-658-8450	
	Mark Wingate, Chief, Projects & Restoration Branch (COE)	504-862-2512	
	Durund Elzey, Projects & Restoration Branch (COE)	504-862-2572	
24. BRIEF DESCRIPTION OF PROJECT AND RELEVANCE TO THIS CONTRACT (Include scope, size, cost)			



MSMM staff prepared GIS mapping of the Parish's existing and proposed sanitary sewer system, and prepared an Environmental Information Document or EID (NEPA document) for its long term wastewater infrastructure plan. The NEPA documentation was prepared per U.S. EPA Region 6 guidelines. The project also involved facilitating and coordinating water and wastewater projects in the Parish, assistance with Parish EPA STAG grant administration and CDBG grant administration, and the area wide planning for wastewater projects on the east bank. MSMM staff interfaced with Parish officials, project engineering firms, federal agencies, and state agencies. Specific projects included: ACUD No. 1 Water Distribution System Improvements, Hillaryville

Community Wastewater Improvements, Darrow Sanitary Sewer System Project Cost Shortfall, Tie-in of the Ascension Parish Jail to the City of Donaldsonville Wastewater Treatment Plant (WWTP), Design of the Ascension Parish regional WWTP, and Planning for water supplies and water franchise agreement.

Professional Service Highlights

- NEPA documentation and Agency coordination
- GIS mapping
- Feasibility studies and Cost estimate
- Prepare presentations and project fact sheets
- Alternatives description and Poster board creation
- Bridge analysis
- CDBG grant

This project also involved maintaining the scope, schedule, and budgets for multiple concurrent projects:

- Donaldsonville to the Gulf Letter Report, compile past **feasibility studies, prepare presentations, detailed mapping, alternatives description, poster board creation** for presentation purposes.
- Mississippi River Commission (MRC) Documentation, **compile past MRC information, detailed mapping, poster board creation.**

- Congressional Delegation Documentation, compile past information, **prepare project fact sheets.**
- **Louisiana Coastal Area (LCA) Documentation, compile information and documentation of past LCA projects, detailed mapping, poster board creation.**
- MRL Carrollton Levee Enlargement, compile past project data for the levee toe and 15 feet past the levee toe, other levee side features, **cost estimates** for the removal of a water line and crossing along the current levee alignment.

Project Highlights

- **Infrastructure included 99,000 lf of water line, 0.16 mgd WWTP, 18,750 lf of gravity sewer and force main, 0.5 mgd WWTP, 1.5 mgd WWTP, 78,800 lf of 16 inch diameter force main**

- MRL Manchac Point, conduct a **bridge analysis, evaluate 3 alternatives** to reach the proposed borrow location at the St. Gabriel Borrow Pit, conduct a **time, cost, and feasibility estimate for each alternative**.
- Ascension Parish Environmental Infrastructure: Data collection,
- document review, prepare **NEPA documentation (Facility Plan and Environmental Information Document or EID, GIS mapping)** following U.S. EPA Region 6 Guidelines for multiple water and wastewater infrastructure projects
- **Program management** of the Corps' Environmental Infrastructure Program and **Community Development Block Grants**.

25. FIRMS FROM SECTION C INVOLVED WITH THIS PROJECT		
(1) FIRM NAME	(2) FIRM LOCATION (<i>City and State</i>)	(3) ROLE
MSMM Engineering, LLC	New Orleans, LA	NEPA documentation, infrastructure planning, demographic and economic analysis, grant application, agency coordination (Corps of Engineers, Parish, LDEQ, LDHH, CDBG), GIS and CAD mapping, agency coordination.