

**F. EXAMPLE PROJECTS WHICH BEST ILLUSTRATE PROPOSED TEAM'S QUALIFICATIONS FOR THIS CONTRACT**

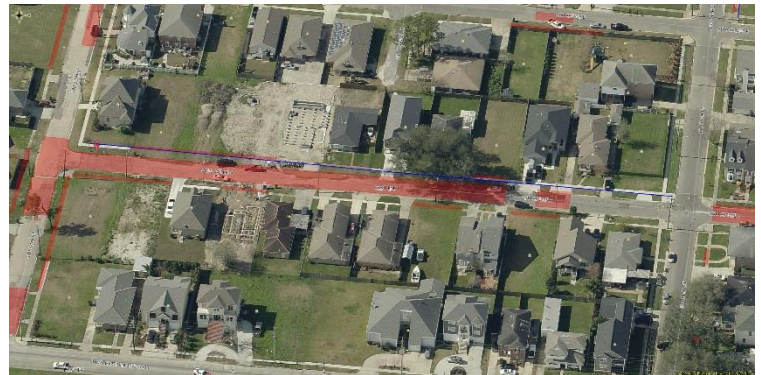
20. EXAMPLE PROJECT KEY NUMBER

*Present as many projects as requested by the agency, or 10 projects if not specified.*

21. TITLE AND LOCATION ( <i>City and State</i> )		22. YEAR COMPLETED	
<b>West End Neighborhood Recovery Roads, New Orleans, LA</b>		PROFESSIONAL SERVICES	CONSTRUCTION ( <i>If applicable</i> )
		<b>2013</b>	<b>2014</b>
23. PROJECT OWNER'S INFORMATION			
23a. PROJECT OWNER		23b. POINT OF CONTACT	23c. TELEPHONE NUMBER
City of New Orleans Department of Public Works DPW No. 2012-FEMA-12N-1		James R. Kapesis, Asst. FEMA Program Manager/Project Manager	504-329-9265
		Josh Hartley, Project Manager	504-658-8042

24. BRIEF DESCRIPTION OF PROJECT AND RELEVANCE TO THIS CONTRACT (*Include scope, size, cost*)

In the aftermath of Hurricane Katrina, the infrastructure of the city of New Orleans suffered major damage. The damage included street and buried utility breakage from flood waters, as well as from disaster recovery operations (heavy trucks, demolition equipment, debris cleanup equipment, etc.). Therefore, the initial damage estimate and the corresponding FEMA reimbursement estimates required to be amended to account for these 'additional' damages. **MSMM was a key player** in this effort in several neighborhoods of the city and was **able to substantiate significant additional damages eligible for FEMA reimbursement**. This project required working under continually changing requirements and a short timeline, which MSMM adhered to successfully via **adaptability and continuous communication** among all parties.



**Professional Service Highlights**

- Develop Project Scoping Report, including analysis of constructability, cost, and time schedule relative to the initial items of work identified as eligible for reimbursement in the FEMA Project Worksheets (PW). This work involved field investigations, GIS mapping, photographic documentation, and CAD drafting.
- Preliminary Design of street and utility repairs, prepare plans and specifications, prepare line and grade analysis, prepare Preliminary Design Report.
- Final Design of street and utility repairs, plans and specifications, bid documents, cost estimates, bid tabulation, award recommendation.
- Construction Administration, review and track submittals and requests for information from contractor, coordination with project manager, FEMA documentation, site visits and progress meetings, review quantities and pay applications.
- Resident Inspection

**Project Highlights**

- Approximately 60,478 ft (11.5 miles) of roadway
- 15 neighborhood streets
- Assessment based on Compliance with Ordinance, Base Failure, and Heavy Equipment Usage.
- Review of Pictometry and Google satellite mapping to identify pre- and post-Hurricane Katrina conditions in the subject streets to substantiate damage calculations.
- Maps and forms to facilitate field visits
- CAD and GIS drafting to lay additional damage items on each plan sheet
- Updated spreadsheets, and prepare image record
- Simultaneous work effort of field work, report preparation, calculation, and revisions due to changes in standards.
- Topographic survey including utilities information.
- Environmental study per FHWA guidelines to complete NEPA documentation.

**Construction Cost = \$9.3 million**

**25. FIRMS FROM SECTION C INVOLVED WITH THIS PROJECT**

(1) FIRM NAME	(2) FIRM LOCATION ( <i>City and State</i> )	(3) ROLE
MSMM Engineering, LLC	New Orleans, LA	Scoping, Preliminary Design, Final Design, Construction Administration, Resident Inspection, Agency Coordination
AIMS Group, Inc.	Metairie, LA	Scoping, Preliminary Design, Final Design, Construction Administration, Resident Inspection, Agency Coordination
BFM Corporation	Kenner, LA	Surveying